

Child-Related Career Breaks and the Evolution of Occupations and Tasks over the Life-Cycle

Holger Stichnoth¹

Hans-Martin von Gaudecker²

¹ZEW Mannheim ²University of Bonn

FDZ-Nutzertagung, Bonn, 3 November 2015

Motivation

- ▶ Women take longer care-related career breaks and work more often in part-time jobs than men

Motivation

- ▶ Women take longer care-related career breaks and work more often in part-time jobs than men
- ▶ Consequences for earnings, wages, bargaining power
 - ▶ SOEP: e.g., Beblo/Wolf (2002), Boll (2009)

Motivation

- ▶ Women take longer care-related career breaks and work more often in part-time jobs than men
- ▶ Consequences for earnings, wages, bargaining power
 - ▶ SOEP: e.g., Beblo/Wolf (2002), Boll (2009)
 - ▶ IABS: Erjnæs/Kunze (2013), Schönberg/Ludsteck (2014)

Motivation

- ▶ Women take longer care-related career breaks and work more often in part-time jobs than men
- ▶ Consequences for earnings, wages, bargaining power
 - ▶ SOEP: e.g., Beblo/Wolf (2002), Boll (2009)
 - ▶ IABS: Erjnæs/Kunze (2013), Schönberg/Ludsteck (2014)
- ▶ This paper: How does the *task-profile of occupations* change due to child-related career breaks?

Motivation

- ▶ Women take longer care-related career breaks and work more often in part-time jobs than men
- ▶ Consequences for earnings, wages, bargaining power
 - ▶ SOEP: e.g., Beblo/Wolf (2002), Boll (2009)
 - ▶ IABS: Erjnæs/Kunze (2013), Schönberg/Ludsteck (2014)
- ▶ This paper: How does the *task-profile of occupations* change due to child-related career breaks?
- ▶ Data: BASiD + BIBB Qualifications & Career Survey

Motivation

- ▶ In the economics literature, not much known about how occupations and tasks evolve *over the lifecycle*

Motivation

- ▶ In the economics literature, not much known about how occupations and tasks evolve *over the lifecycle*
- ▶ Focus mostly on changes over time and consequences for aggregate wage distribution (e.g., Black and Spitz-Oener 2010)

Motivation

- ▶ In the economics literature, not much known about how occupations and tasks evolve *over the lifecycle*
- ▶ Focus mostly on changes over time and consequences for aggregate wage distribution (e.g., Black and Spitz-Oener 2010)
- ▶ Existing lifecycle studies only for men (Gathmann and Schönberg 2010, Yamaguchi 2010)

BASiD data

- ▶ Joint effort of RDC's of IAB and DRV-Bund

BASiD data

- ▶ Joint effort of RDC's of IAB and DRV-Bund
 - ▶ VSKT 2007, cohorts 1940–1977

BASiD data

- ▶ Joint effort of RDC's of IAB and DRV-Bund
 - ▶ VSKT 2007, cohorts 1940–1977
 - ▶ IAB: Employment records, UI benefits, training, occupation

BASiD data

- ▶ Joint effort of RDC's of IAB and DRV-Bund
 - ▶ VSKT 2007, cohorts 1940–1977
 - ▶ IAB: Employment records, UI benefits, training, occupation
- ▶ First time that fertility and labour market history are available in large dataset (n=568.468)

BASiD data

- ▶ Joint effort of RDC's of IAB and DRV-Bund
 - ▶ VSKT 2007, cohorts 1940–1977
 - ▶ IAB: Employment records, UI benefits, training, occupation
- ▶ First time that fertility and labour market history are available in large dataset (n=568.468)
- ▶ But: limited information on hours; no household context; education variable noisy; top coding at SSC threshold

Cohort graphs

- ▶ Employment

Cohort graphs

- ▶ Employment
- ▶ Full-time employment (conditional)

Cohort graphs

- ▶ Employment
- ▶ Full-time employment (conditional)
- ▶ Annual earnings (unconditional)

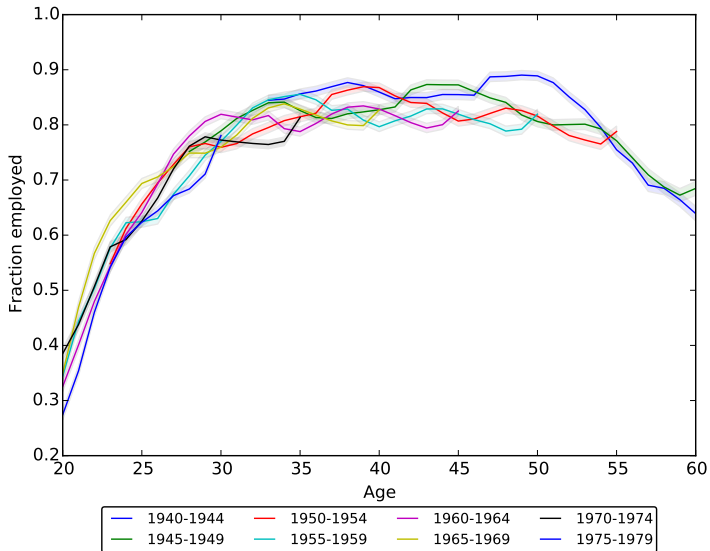
Cohort graphs

- ▶ Employment
- ▶ Full-time employment (conditional)
- ▶ Annual earnings (unconditional)
- ▶ (i) Men, women (ii) men, women by completed fertility

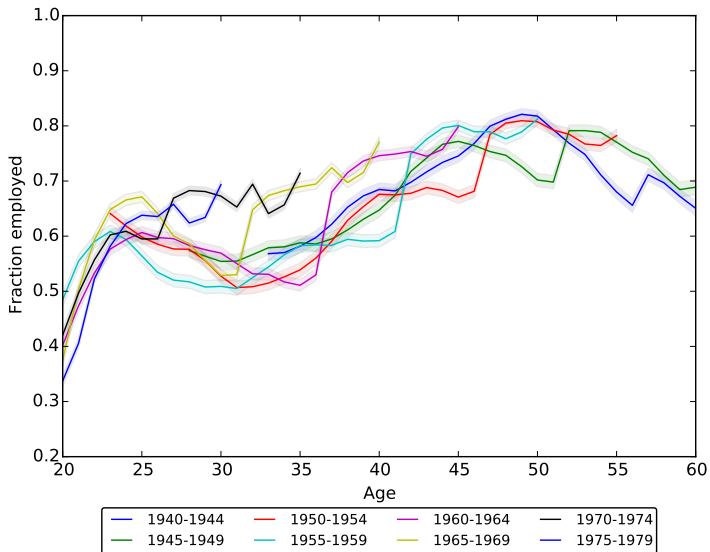
Cohort graphs

- ▶ Employment
 - ▶ Full-time employment (conditional)
 - ▶ Annual earnings (unconditional)
 - ▶ (i) Men, women (ii) men, women by completed fertility
-
- ▶ Large dataset → precise estimates even by cohort and subgroup

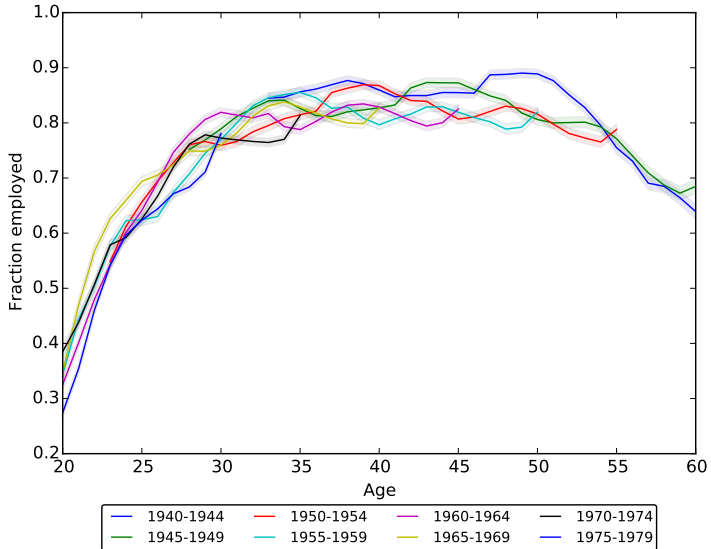
Employment, men



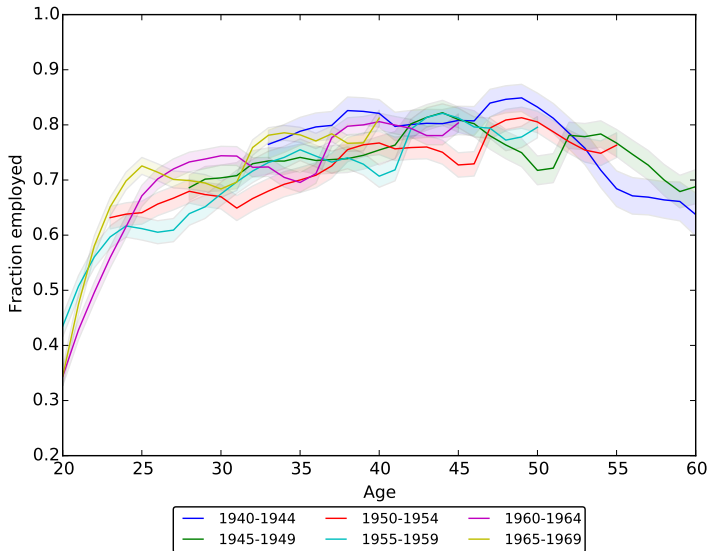
Employment, women



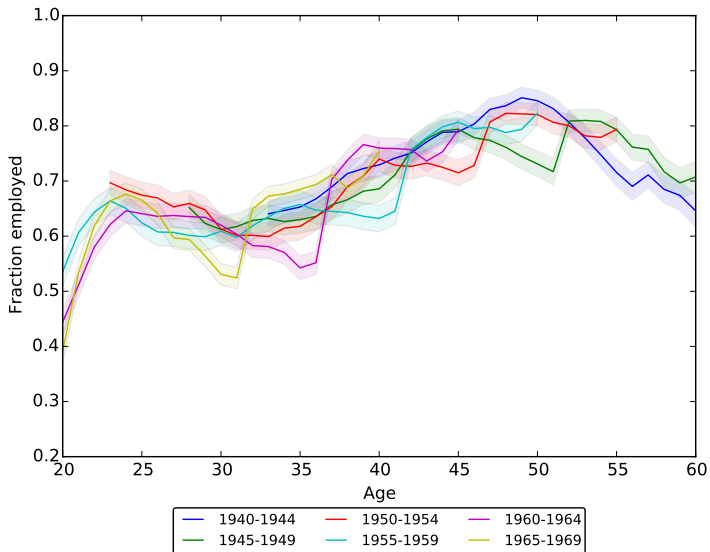
Employment, men



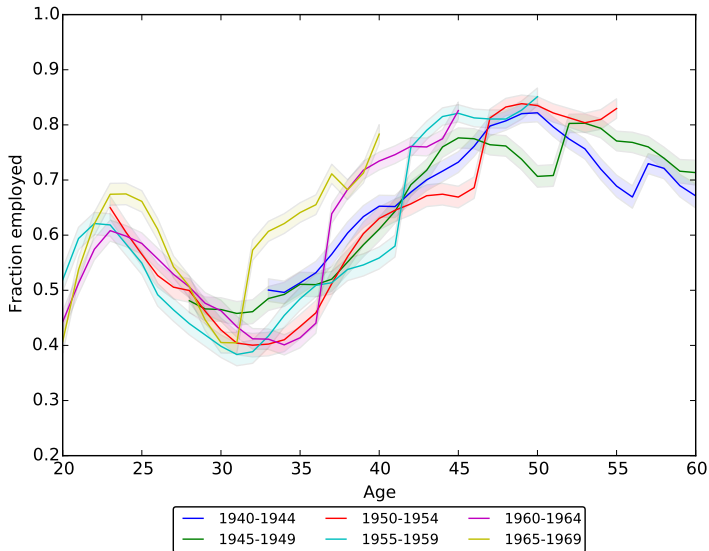
Employment, women, no children



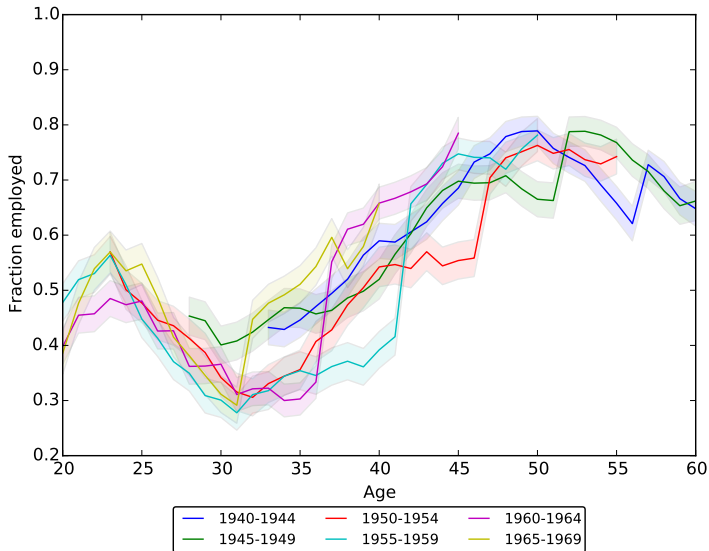
Employment, women, 1 child



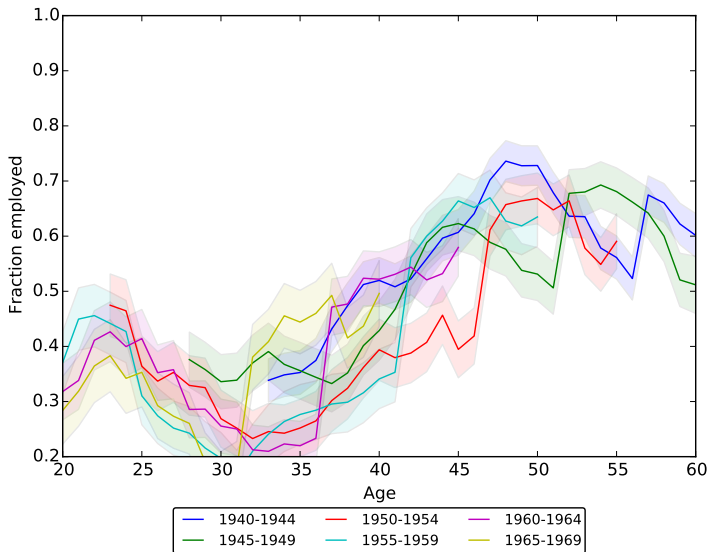
Employment, women, 2 children



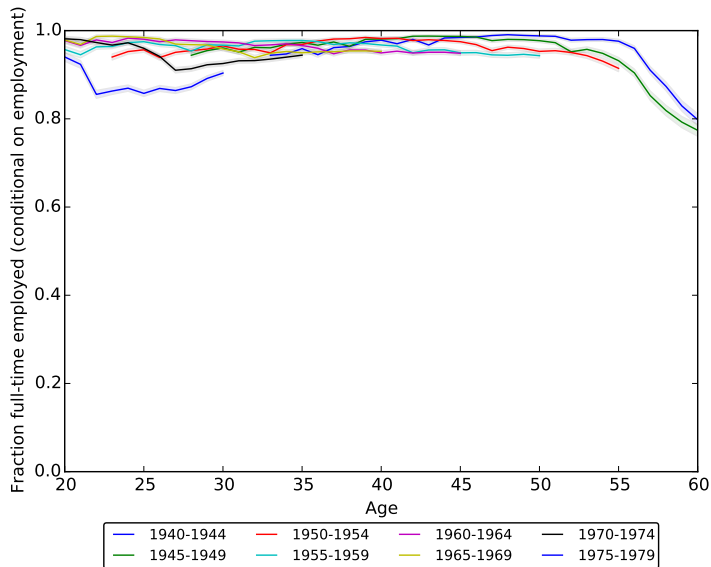
Employment, women, 3 children



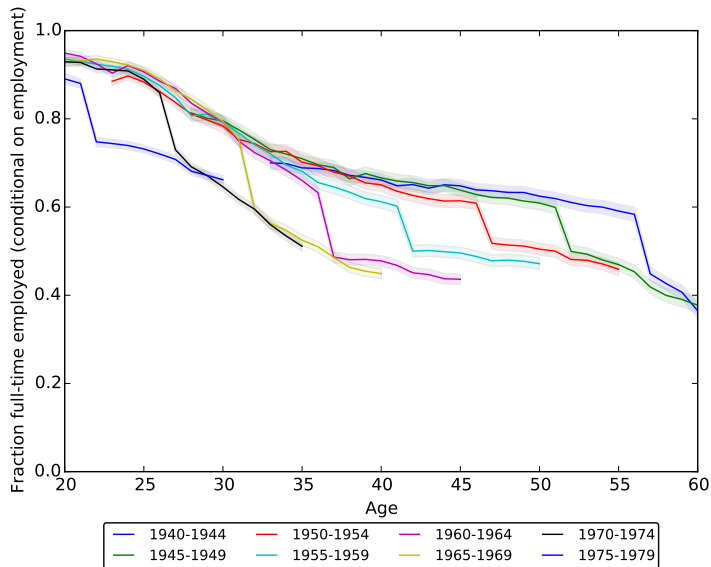
Employment, women, 4 or more children



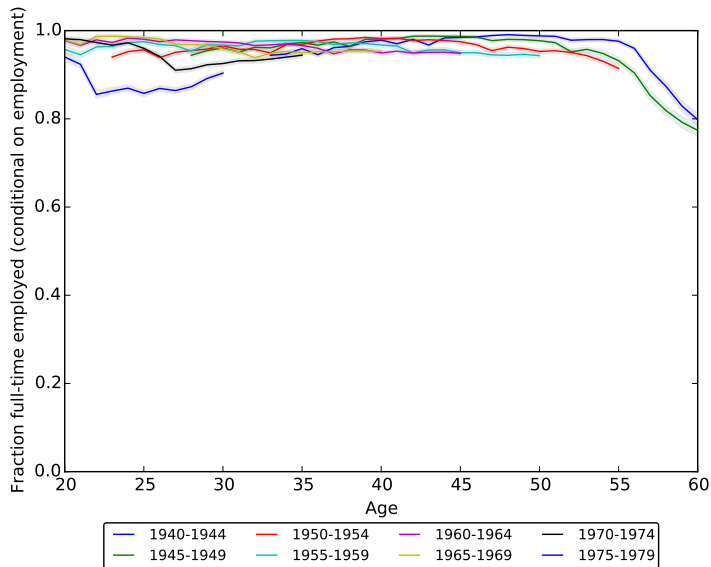
Full time employment, men



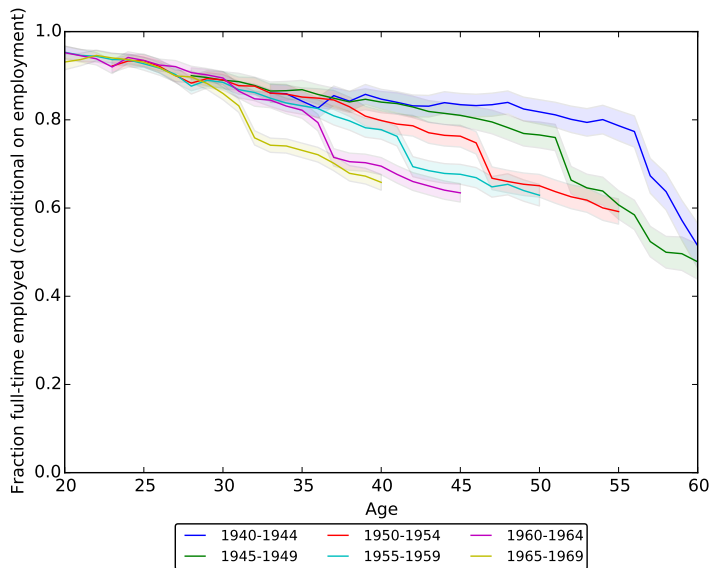
Full time employment, women



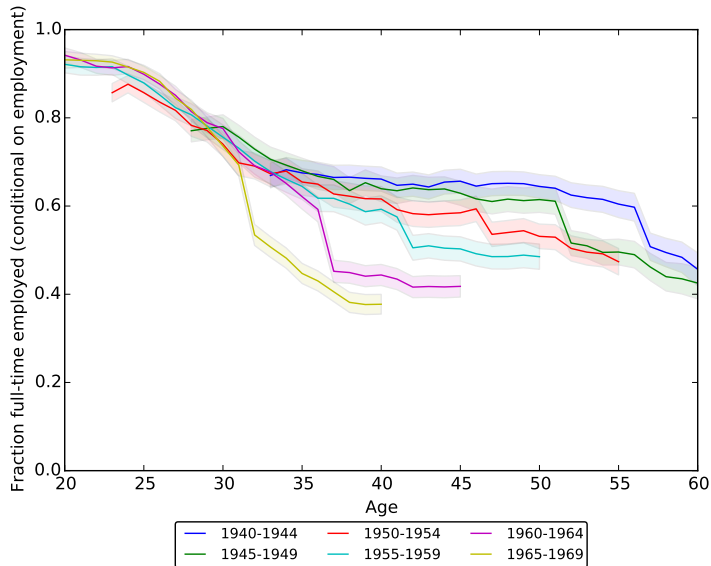
Full time employment, men



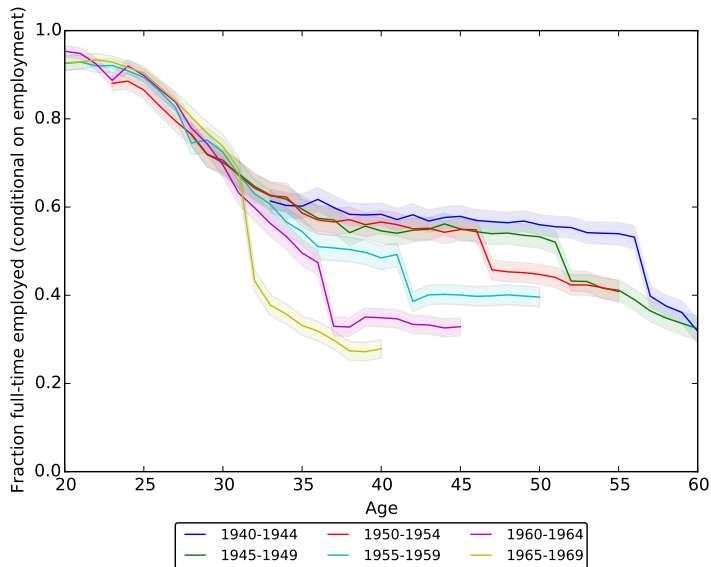
Full time employment, women, no children



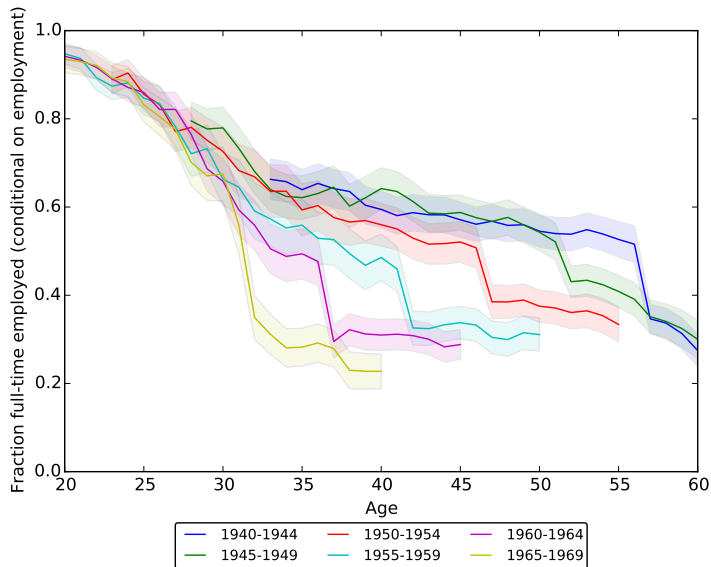
Full time employment, women, 1 child



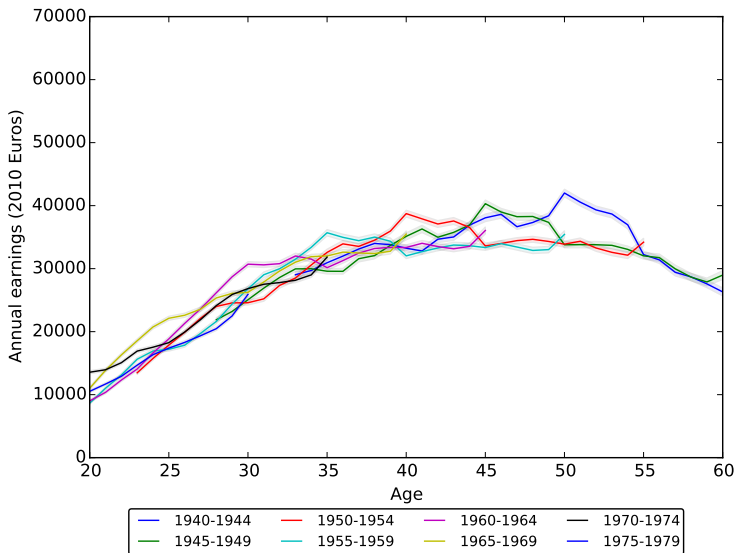
Full time employment, women, 2 children



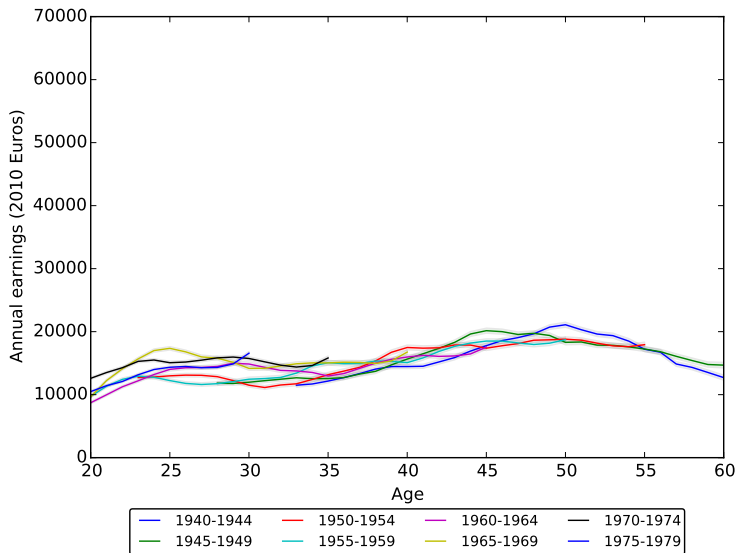
Full time employment, women, 3 children



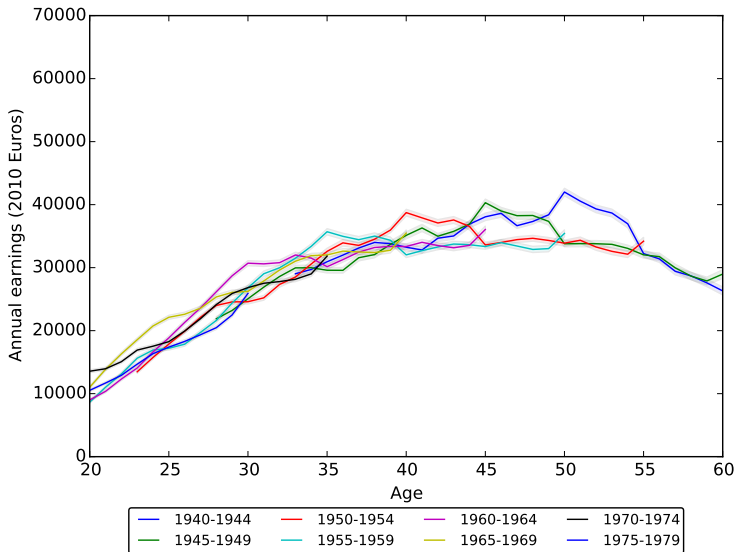
Earnings, men



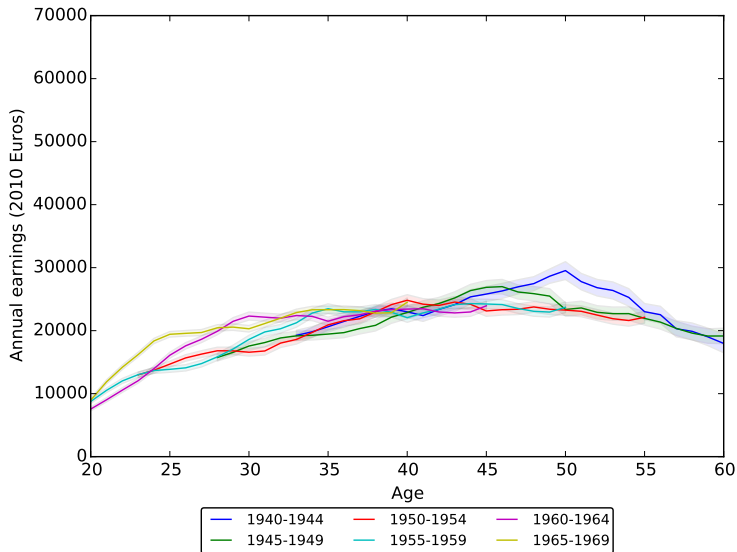
Earnings, women



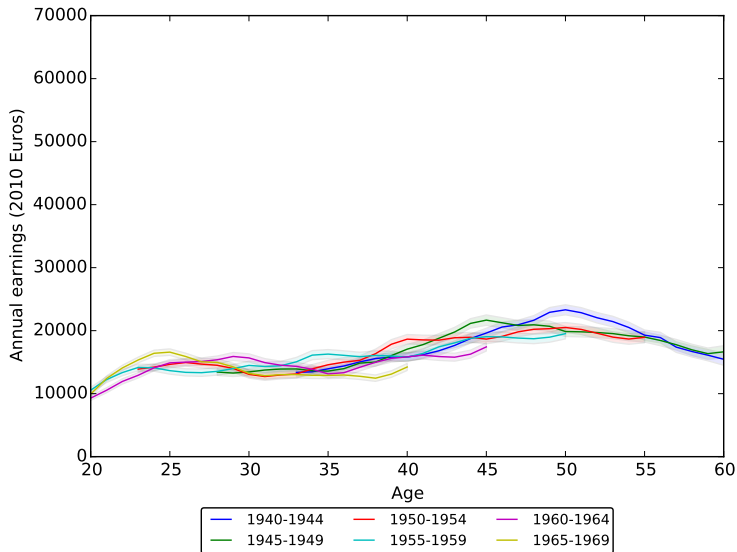
Earnings, men



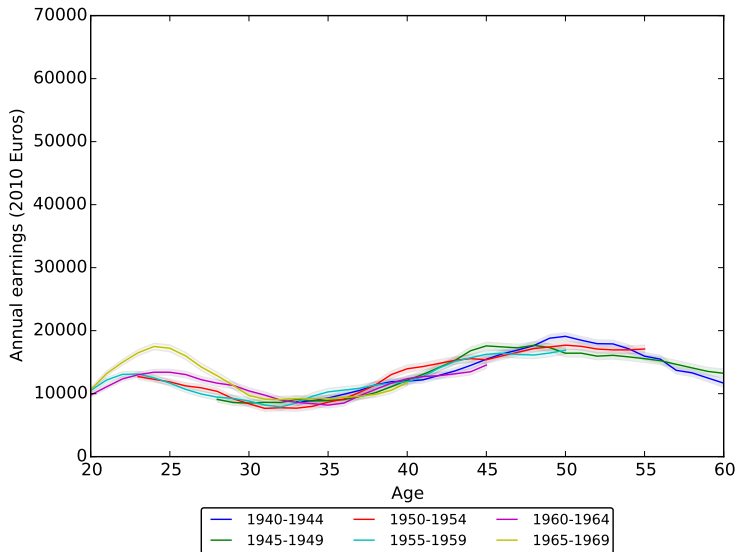
Earnings, women, no children



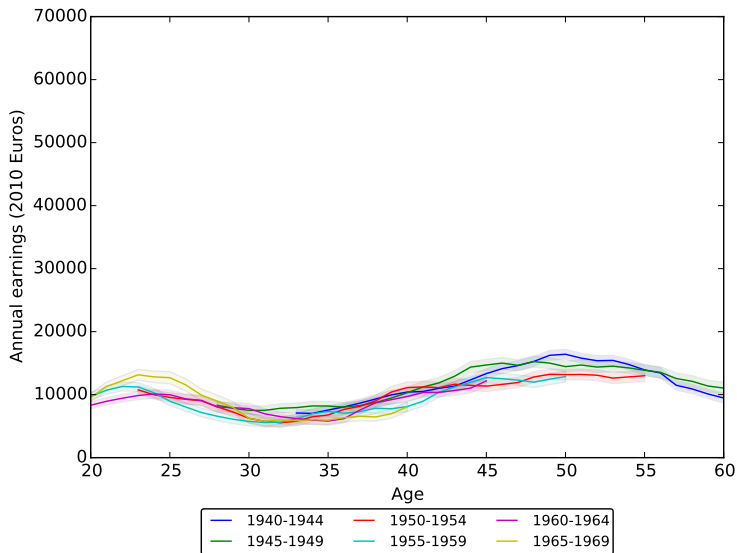
Earnings, women, 1 child



Earnings, women, 2 children



Earnings, women, 3 children



Event study approach

- ▶ Compare (age- and year-adjusted) outcomes with year before first birth; comparisons *within* the treatment group only

$$Y_{ist} = \sum_{t \neq -1} \alpha_t \cdot EVENT_{it} + \sum_j \beta_j \cdot AGE_{is}^j + \sum_s \gamma_s \cdot YEAR_s + v_{ist},$$

Event study approach

- ▶ Compare (age- and year-adjusted) outcomes with year before first birth; comparisons *within* the treatment group only

$$Y_{ist} = \sum_{t \neq -1} \alpha_t \cdot EVENT_{it} + \sum_j \beta_j \cdot AGE_{is}^j + \sum_s \gamma_s \cdot YEAR_s + v_{ist},$$

- ▶ Event time $t = 0$ is year of *first* birth; i denotes individuals and s calendar time

Event study approach

- ▶ Compare (age- and year-adjusted) outcomes with year before first birth; comparisons *within* the treatment group only

$$Y_{ist} = \sum_{t \neq -1} \alpha_t \cdot EVENT_{it} + \sum_j \beta_j \cdot AGE_{is}^j + \sum_s \gamma_s \cdot YEAR_s + v_{ist},$$

- ▶ Event time $t = 0$ is year of *first* birth; i denotes individuals and s calendar time
- ▶ Penalty: $P_t \equiv \hat{\alpha}_t / E[\hat{Y}_{ist} \mid t]$, where \hat{Y}_{ist} is the prediction without the penalty (i.e., for $\alpha_{-1} \equiv 0$).

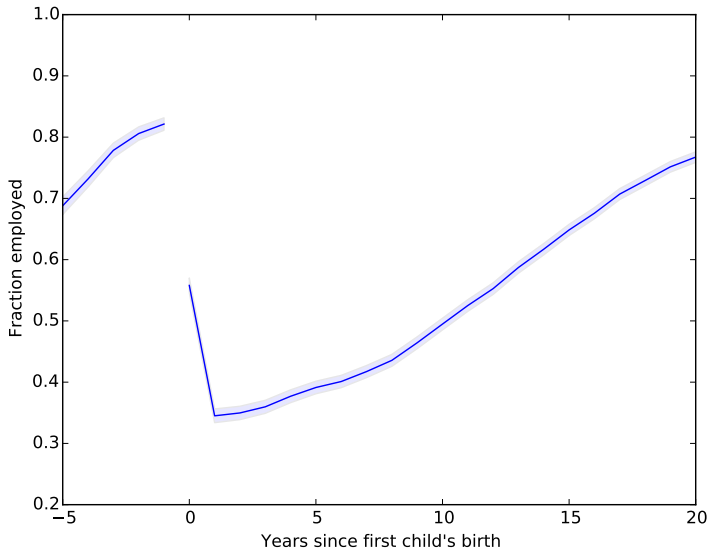
Event study approach

- ▶ Compare (age- and year-adjusted) outcomes with year before first birth; comparisons *within* the treatment group only

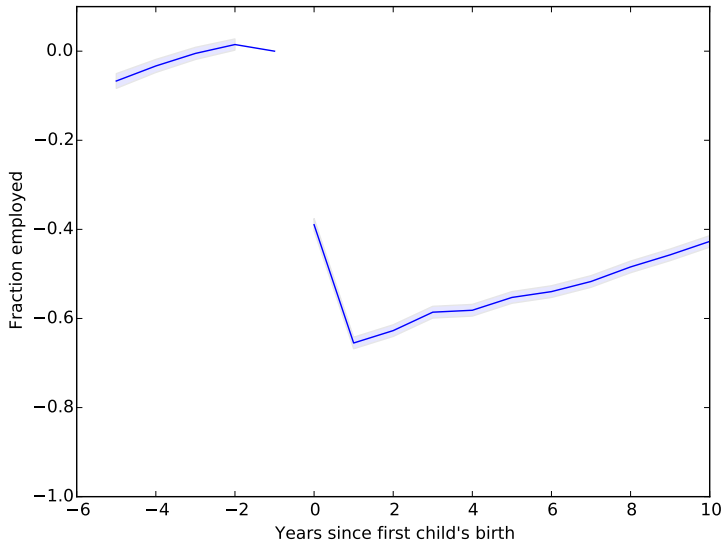
$$Y_{ist} = \sum_{t \neq -1} \alpha_t \cdot EVENT_{it} + \sum_j \beta_j \cdot AGE_{is}^j + \sum_s \gamma_s \cdot YEAR_s + v_{ist},$$

- ▶ Event time $t = 0$ is year of *first* birth; i denotes individuals and s calendar time
- ▶ Penalty: $P_t \equiv \hat{\alpha}_t / E[\hat{Y}_{ist} \mid t]$, where \hat{Y}_{ist} is the prediction without the penalty (i.e., for $\alpha_{-1} \equiv 0$).
- ▶ Unlike Kleven, Landais, and Sogaard (2015), cannot compare penalties for men and women as no fertility info for men in BASiD data

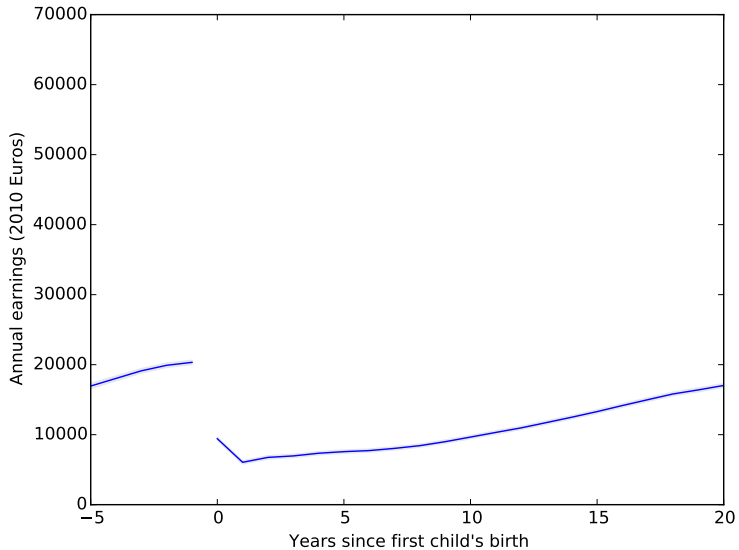
Levels of employment



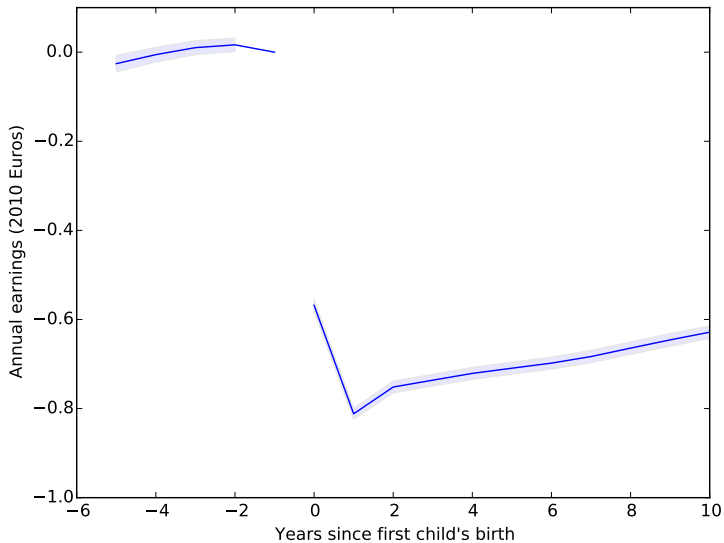
Child penalty for employment



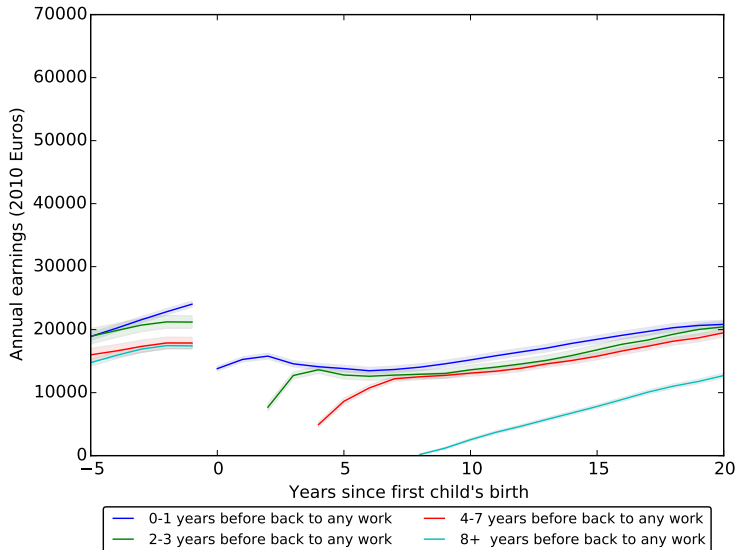
Levels of annual earnings



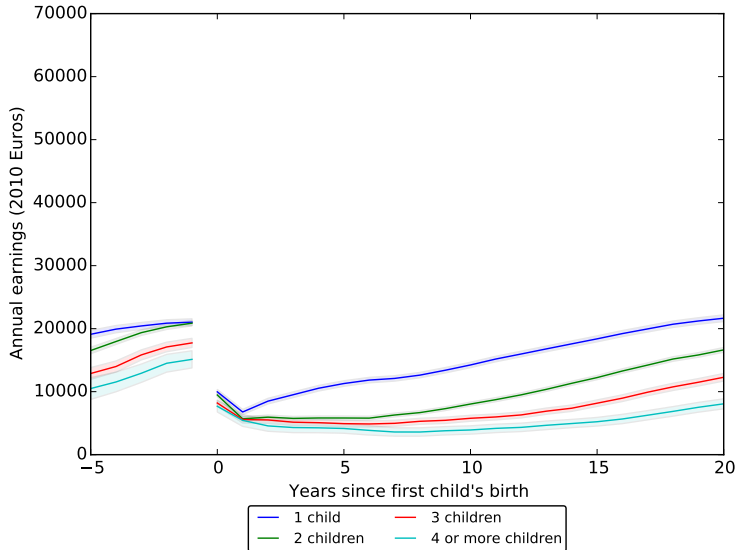
Child penalty for annual earnings



Levels of annual earnings



Levels of annual earnings



Summary so far

- ▶ BASiD data confirm lifecycle divergence of employment, full-time employment and earnings between men and women

Summary so far

- ▶ BASiD data confirm lifecycle divergence of employment, full-time employment and earnings between men and women
- ▶ Child penalties huge compared with Denmark (Kleven et al.)

Summary so far

- ▶ BASiD data confirm lifecycle divergence of employment, full-time employment and earnings between men and women
- ▶ Child penalties huge compared with Denmark (Kleven et al.)
 - ▶ Participation: 50% vs. 10%

Summary so far

- ▶ BASiD data confirm lifecycle divergence of employment, full-time employment and earnings between men and women
- ▶ Child penalties huge compared with Denmark (Kleven et al.)
 - ▶ Participation: 50% vs. 10%
 - ▶ Unconditional earnings: 70% vs. 20%

Summary so far

- ▶ BASiD data confirm lifecycle divergence of employment, full-time employment and earnings between men and women
- ▶ Child penalties huge compared with Denmark (Kleven et al.)
 - ▶ Participation: 50% vs. 10%
 - ▶ Unconditional earnings: 70% vs. 20%
- ▶ Size of penalty related to length of break and # of children

Summary so far

- ▶ BASiD data confirm lifecycle divergence of employment, full-time employment and earnings between men and women
- ▶ Child penalties huge compared with Denmark (Kleven et al.)
 - ▶ Participation: 50% vs. 10%
 - ▶ Unconditional earnings: 70% vs. 20%
- ▶ Size of penalty related to length of break and # of children
 - ▶ Some differences apparent already *before* 1st birth

Task content of occupations

- ▶ BIBB Qualifications & Career Survey

Task content of occupations

- ▶ BIBB Qualifications & Career Survey
- ▶ 6 repeated cross sections from 1979 - 2012

Task content of occupations

- ▶ BIBB Qualifications & Career Survey
- ▶ 6 repeated cross sections from 1979 - 2012
- ▶ Employees were asked what tasks they perform, e.g.: “How often do you repair things?”

Task content of occupations

- ▶ BIBB Qualifications & Career Survey
- ▶ 6 repeated cross sections from 1979 - 2012
- ▶ Employees were asked what tasks they perform, e.g.: “How often do you repair things?”
- ▶ Match with BASiD data on 120 occupations

Task categories

- ▶ nonroutine analytical

Task categories

- ▶ nonroutine analytical
 - ▶ e.g., researching and analyzing

Task categories

- ▶ nonroutine analytical
 - ▶ e.g., researching and analyzing
- ▶ nonroutine interactive

Task categories

- ▶ nonroutine analytical
 - ▶ e.g., researching and analyzing
- ▶ nonroutine interactive
 - ▶ e.g., managing and organizing

Task categories

- ▶ nonroutine analytical
 - ▶ e.g., researching and analyzing
- ▶ nonroutine interactive
 - ▶ e.g., managing and organizing
- ▶ routine cognitive

Task categories

- ▶ nonroutine analytical
 - ▶ e.g., researching and analyzing
- ▶ nonroutine interactive
 - ▶ e.g., managing and organizing
- ▶ routine cognitive
 - ▶ e.g., calculating and bookkeeping

Task categories

- ▶ nonroutine analytical
 - ▶ e.g., researching and analyzing
- ▶ nonroutine interactive
 - ▶ e.g., managing and organizing
- ▶ routine cognitive
 - ▶ e.g., calculating and bookkeeping
- ▶ routine manual

Task categories

- ▶ nonroutine analytical
 - ▶ e.g., researching and analyzing
- ▶ nonroutine interactive
 - ▶ e.g., managing and organizing
- ▶ routine cognitive
 - ▶ e.g., calculating and bookkeeping
- ▶ routine manual
 - ▶ e.g., operating machinery

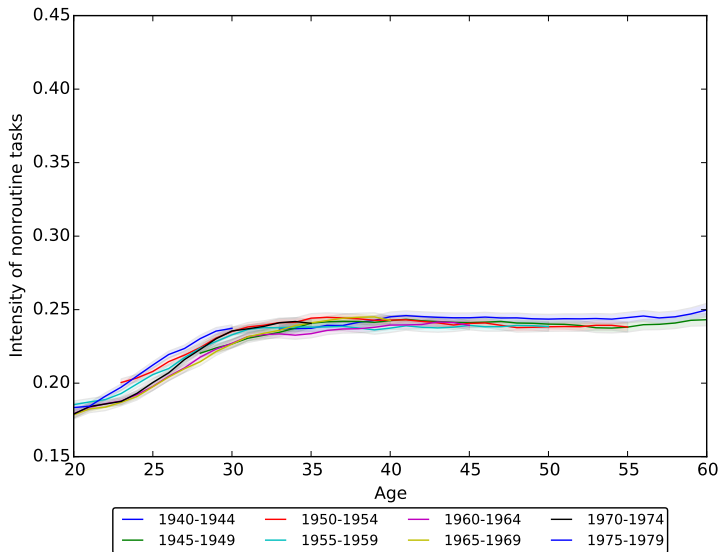
Task categories

- ▶ nonroutine analytical
 - ▶ e.g., researching and analyzing
- ▶ nonroutine interactive
 - ▶ e.g., managing and organizing
- ▶ routine cognitive
 - ▶ e.g., calculating and bookkeeping
- ▶ routine manual
 - ▶ e.g., operating machinery
- ▶ nonroutine manual

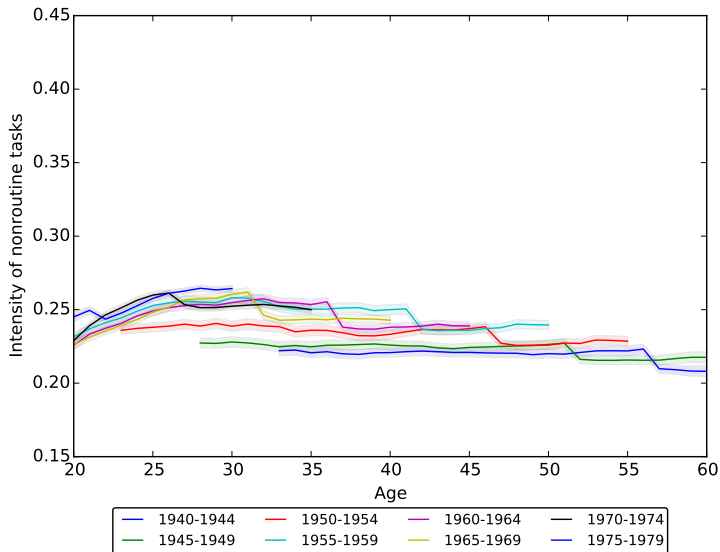
Task categories

- ▶ nonroutine analytical
 - ▶ e.g., researching and analyzing
- ▶ nonroutine interactive
 - ▶ e.g., managing and organizing
- ▶ routine cognitive
 - ▶ e.g., calculating and bookkeeping
- ▶ routine manual
 - ▶ e.g., operating machinery
- ▶ nonroutine manual
 - ▶ e.g., serving and repairing

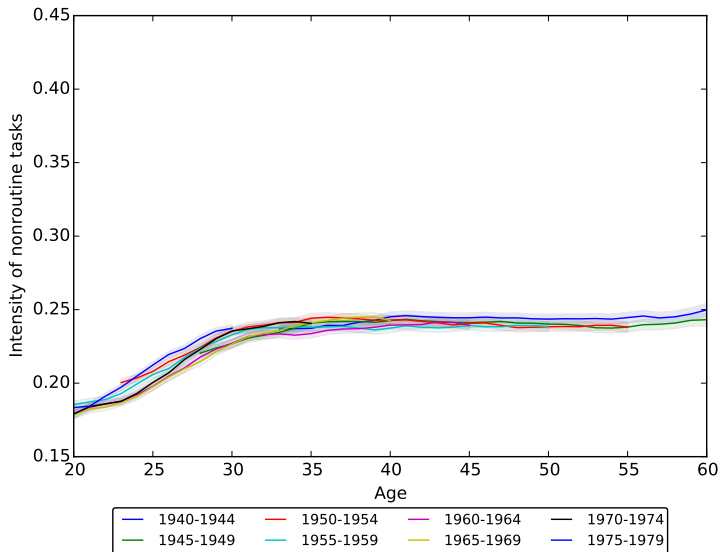
Nonroutine tasks, men



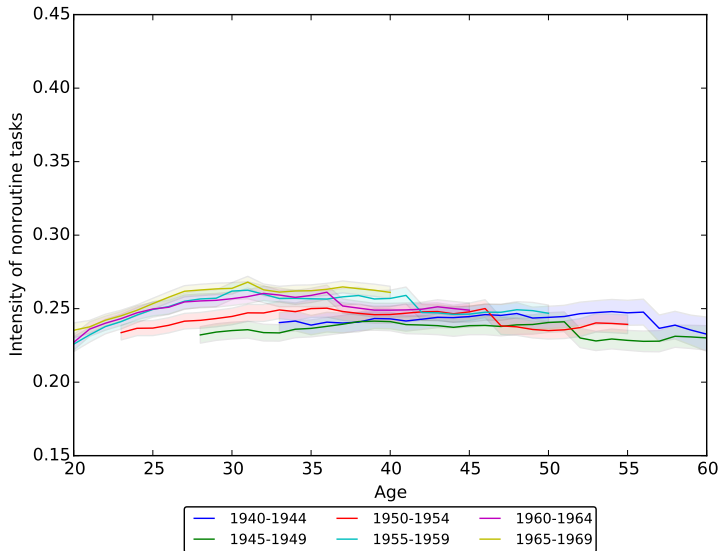
Nonroutine tasks, women



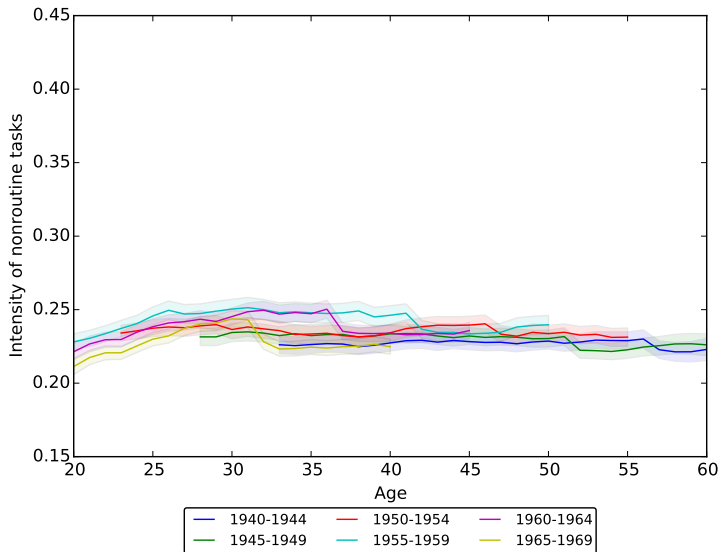
Nonroutine tasks, men



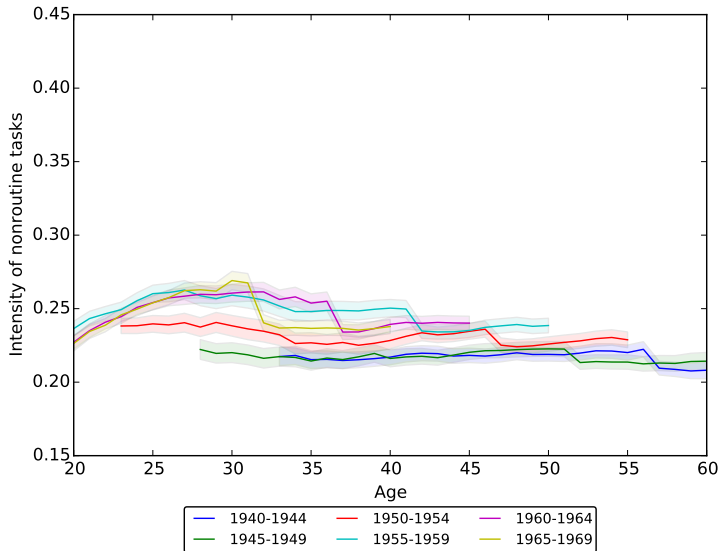
Nonroutine tasks, women, no children



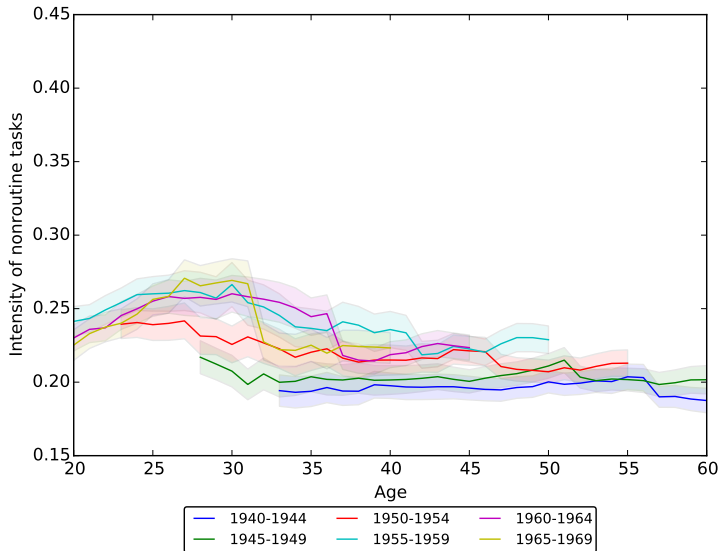
Nonroutine tasks, women, 1 child



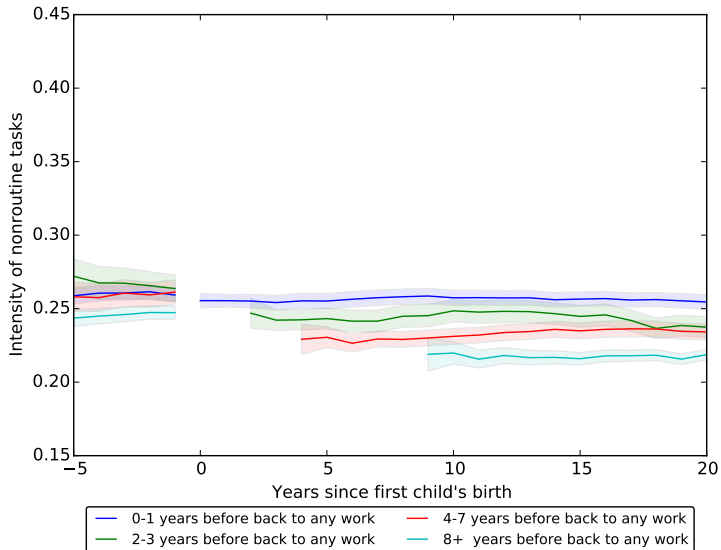
Nonroutine tasks, women, 2 children



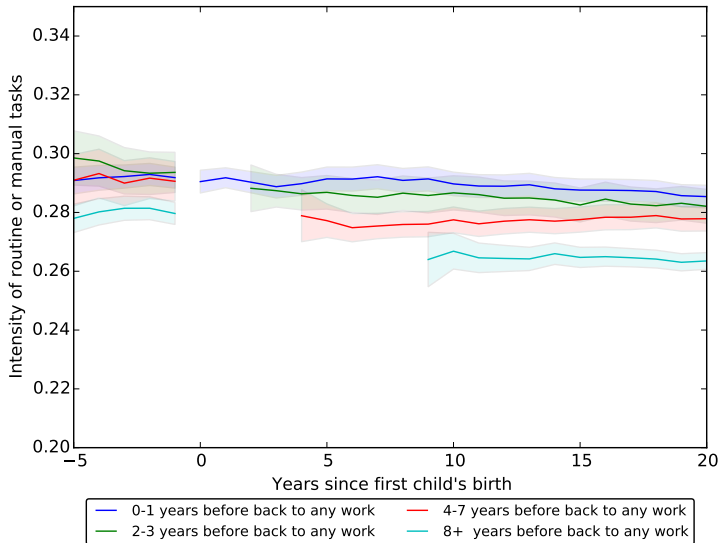
Nonroutine tasks, women, 3 children



Levels of nonroutine tasks



Levels of routine or manual tasks



Summary/Discussion

- ▶ After birth of 1st child, women less often in nonroutine occ.
(also: less often routine cognitive, not shown here)

Summary/Discussion

- ▶ After birth of 1st child, women less often in nonroutine occ.
(also: less often routine cognitive, not shown here)
 - ▶ Bigger change for longer breaks

Summary/Discussion

- ▶ After birth of 1st child, women less often in nonroutine occ.
(also: less often routine cognitive, not shown here)
 - ▶ Bigger change for longer breaks
- ▶ Likely to be one channel behind wage divergence

Summary/Discussion

- ▶ After birth of 1st child, women less often in nonroutine occ.
(also: less often routine cognitive, not shown here)
 - ▶ Bigger change for longer breaks
- ▶ Likely to be one channel behind wage divergence
 - ▶ (Increasing) wage penalty as routine tasks more easily automated
(Autor, Levy, Murnane 2003, Spitz-Oener 2006)

Summary/Discussion

- ▶ After birth of 1st child, women less often in nonroutine occ.
(also: less often routine cognitive, not shown here)
 - ▶ Bigger change for longer breaks
- ▶ Likely to be one channel behind wage divergence
 - ▶ (Increasing) wage penalty as routine tasks more easily automated
(Autor, Levy, Murnane 2003, Spitz-Oener 2006)
- ▶ Then why the change away from nonroutine and cognitive occ.?

Summary/Discussion

- ▶ After birth of 1st child, women less often in nonroutine occ.
(also: less often routine cognitive, not shown here)
 - ▶ Bigger change for longer breaks
- ▶ Likely to be one channel behind wage divergence
 - ▶ (Increasing) wage penalty as routine tasks more easily automated
(Autor, Levy, Murnane 2003, Spitz-Oener 2006)
- ▶ Then why the change away from nonroutine and cognitive occ.?
 - ▶ Skill depreciation, difficulty to return into old occupation
(esp. if break > PL)?

Summary/Discussion

- ▶ After birth of 1st child, women less often in nonroutine occ.
(also: less often routine cognitive, not shown here)
 - ▶ Bigger change for longer breaks
- ▶ Likely to be one channel behind wage divergence
 - ▶ (Increasing) wage penalty as routine tasks more easily automated
(Autor, Levy, Murnane 2003, Spitz-Oener 2006)
- ▶ Then why the change away from nonroutine and cognitive occ.?
 - ▶ Skill depreciation, difficulty to return into old occupation
(esp. if break > PL)?
 - ▶ Routine tasks more amenable to part-time work (Goldin 2014)?

Summary/Discussion

- ▶ After birth of 1st child, women less often in nonroutine occ.
(also: less often routine cognitive, not shown here)
 - ▶ Bigger change for longer breaks
- ▶ Likely to be one channel behind wage divergence
 - ▶ (Increasing) wage penalty as routine tasks more easily automated
(Autor, Levy, Murnane 2003, Spitz-Oener 2006)
- ▶ Then why the change away from nonroutine and cognitive occ.?
 - ▶ Skill depreciation, difficulty to return into old occupation
(esp. if break > PL)?
 - ▶ Routine tasks more amenable to part-time work (Goldin 2014)?
- ▶ "Verwertung von Bildung und Beruf" – what role for public policy?

Outlook

- ▶ Quantify how these task changes translate into wages

Outlook

- ▶ Quantify how these task changes translate into wages
 - ▶ Introduce tasks, skills and their interaction into wage equation

Outlook

- ▶ Quantify how these task changes translate into wages
 - ▶ Introduce tasks, skills and their interaction into wage equation
- ▶ Take selection into account by modelling employment and fertility choices in a lifecycle framework

Outlook

- ▶ Quantify how these task changes translate into wages
 - ▶ Introduce tasks, skills and their interaction into wage equation
- ▶ Take selection into account by modelling employment and fertility choices in a lifecycle framework
- ▶ Use the model for counterfactual policy analyses

Outlook

- ▶ Quantify how these task changes translate into wages
 - ▶ Introduce tasks, skills and their interaction into wage equation
- ▶ Take selection into account by modelling employment and fertility choices in a lifecycle framework
- ▶ Use the model for counterfactual policy analyses
 - ▶ Parental leave, parental benefits, income tax splitting, spousal coinsurance, Minijobs, ...